

The NX Group is committed to **health management**.

The NX Group is committed to employee health as a management imperative.

We formulated the NX Group Health Declaration as a group-wide policy on health management.

We pursue health management by communicating this policy both within and outside the group.

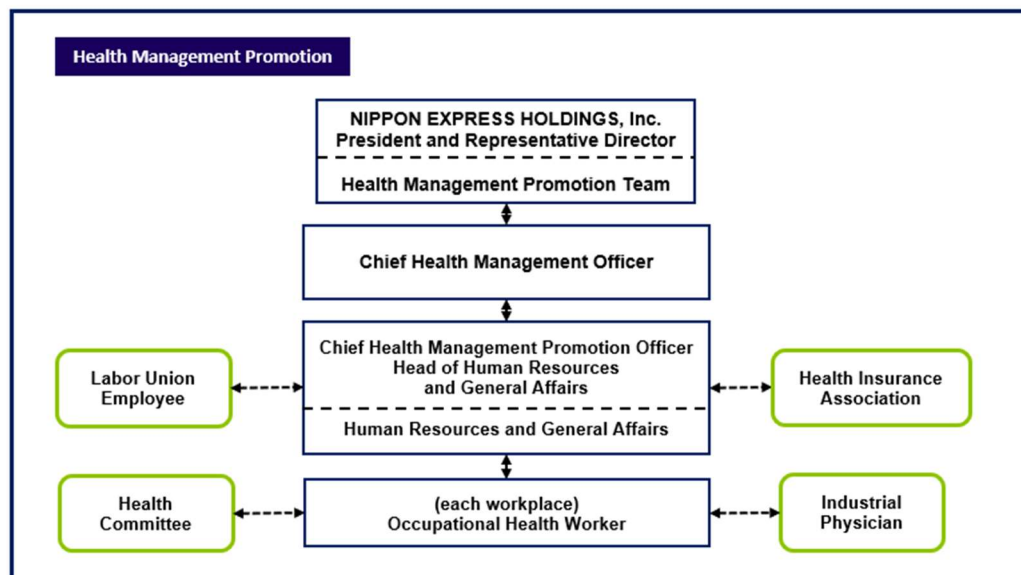
< Health Declaration >

The Nippon Express Group supports the physical and mental health of its employees and aims to be a company where all its employees can achieve their maximum performance and continue to grow by creating workplaces full of smiles.

In keeping with its belief that "health is one of our greatest assets", the Nippon Express Group

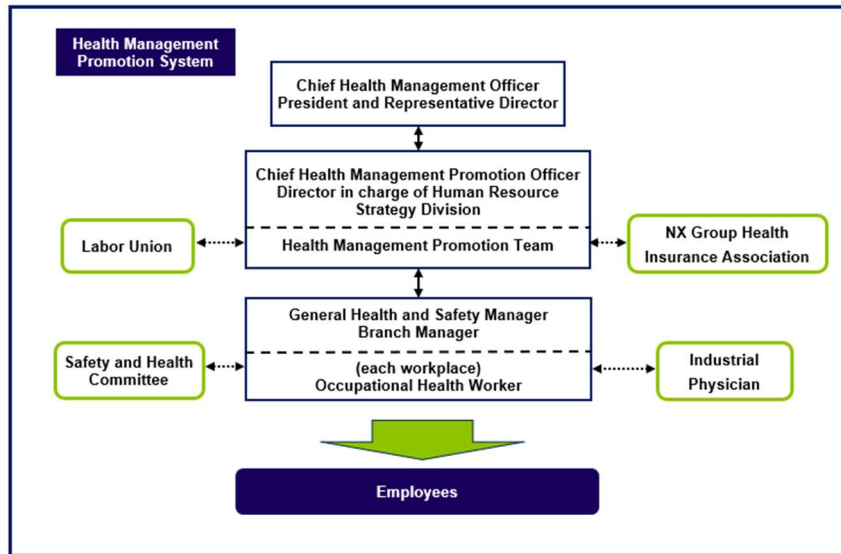
- will proactively support its employees in their efforts to improve their health,
- will strive to create workplace environments in which employees can work with smiles and enthusiasm, and
- will aim to be a company where all employees can exercise their abilities and work with a sense of fulfillment.

NX Group Health Management Promotion System



Nippon Express Initiatives

Health Management Promotion System



Health Issues and Initiatives

We pursue health management by identifying and understanding the expected outcomes of health management, as well as the linkage between specific initiatives and management issues we wish to resolve. We accomplish this understanding using a health management strategy map.

Health Management Strategy Map

