

Economic Value

Management Approach



Realize sustainable growth through collaboration and co-creation

We will achieve sustainable growth for NX by creating new value and being trusted by society through collaboration and co-creation with other companies and by deepening our ties with local communities.

Main Sustainability Issues

- Improving Quality and Creating New Value

Description in the Sustainability Data Book

- Strengthen global partnerships
- Contribute to society through business operations

The NIPPON EXPRESS GROUP's Approach

- Promote value creation for customers and society and solutions to social issues through innovation
- Resolve community-based issues and contribute to social development

Innovation Based on Collaboration and Co-creation

Strengthen Global Partnerships

Our View on the Creation of Innovations Through Collaboration and Co-creation Policies and Targets

Since its founding in 1937, the NIPPON EXPRESS GROUP has been proposing a variety of new services and solutions with the mission of contributing to the development of society through logistics. On the other hand, the times and environment are changing at an accelerating pace, so it is necessary to provide new value with a sense of speed while making use of the knowledge and experience accumulated by the NIPPON EXPRESS GROUP.

Against this backdrop, our policy is to transform ourselves and provide new value to our customers through co-creation with startups with new business ideas and technologies.

Promote Open Innovation Activities and Achievements

The NIPPON EXPRESS GROUP is promoting business co-creation with promising startups in Japan and overseas that have strengths in new technologies and business ideas that contribute to the promotion of DX and sustainability, and in areas that contribute to new businesses in the medium to long term. In January 2023, to strengthen its activities, the NX Global Innovation Fund as well as the Corporate Venture Division will be established. Over the next five years, we will invest 5 billion yen in promising startups and strengthen relationships with startups while pursuing open innovation.

Paving the way for new challenges



NX Group's investment fund that invests ¥5 billion over 5 years into promising startups

Topics

Nippon Express Co., Ltd. Releases its Partnership Building Declaration (December 2022)

Nippon Express Co., Ltd. has endorsed the aims of the Promotional Council for Building Partnerships for the Future, whose members include the Chairman of Keidanren (Japan Business Federation), the President of the Japan Chamber of Commerce and Industry, the President of the Japanese Trade Union Confederation, and relevant ministers (Cabinet Office, Ministry of Economy, Trade and Industry, Ministry of Health, Labor and Welfare, Ministry of Agriculture, Forestry and Fisheries, Ministry of Land, Infrastructure, Transport and Tourism), resulting in the release of the Company's Partnership Building Declaration. The Partnership Building Declaration is a declaration in the name of a company representative that the company will build new partnerships by promoting cooperation, coexistence, and co-prosperity with supply chain business partners and other value-creating businesses.



We aim to build new partnerships while promoting collaboration and co-existence and co-prosperity with business partners in the supply chain and businesses seeking to create value.



Please see our website for details.
* Japanese version



Contributing to the Development of Local Communities

Contribute to Society Through Our Business Operations

Our View on Community Involvement

Policies and Targets

The NIPPON EXPRESS GROUP's business activities rely on local social infrastructure such as roadways, railways, ports, and airports and are closely tied to the relevant communities and societies. Recognizing its social and public missions as a logistics company, the NIPPON EXPRESS GROUP will communicate actively with local communities and engage in social action programs rooted in these communities.

Dispatching Personnel to Universities to Give Lectures for Endowed Courses

Activities and Achievements

The NIPPON EXPRESS GROUP has been dispatching personnel to give lectures to university students in courses organized by the Japan Association for Logistics and Transport for the purpose of developing human resources for the logistics and transport industry. Lectures on topics relating to logistics and environmental issues were given to share information on the logistics-related activities that the Group has been undertaking to address environmental issues such as global warming. Attended by 60 students from Yokohama National University, 50 from Hosei University, and 200 from Aoyama Gakuin University in FY2022, the lectures helped the students to deepen their interest in and understanding of logistics, and offered opportunities for the Group to solicit frank opinions from young people.



Endowed course

Reforestation Activities in "NIPPON EXPRESS GROUP Forests"

Activities and Achievements

As a part of our environmental and social contribution activities and under the concepts of enhancing the multifaceted functions of forests, contributing to local communities, and fostering environmental human resources, we systematically plant trees and clear undergrowth twice a year with the cooperation and guidance of local government offices and forestry cooperatives. To date, approximately 2,000 people have participated in these reforestation activities, planting more than 10,000 seedlings.

Continuing from FY2021, in FY2022, due to measures to combat COVID-19, employee participation in activities was canceled. Nonetheless, in Iide Town, the local management committee was asked to conduct a survey on the growth of the trees planted and, in Nichinan Town, the Forest Union continued to look after the trees, all of which grew favorably. The NIPPON EXPRESS GROUP will continue our efforts to preserve the natural environment for future generations.



Surveying tree cultivation

Contribute to World Peace Through Our Business Operations

Activities and Achievements

The Forwarding Business Unit of Nippon Express Co., Ltd. cooperates with local logistics companies on export/import customs clearance, deliveries and other lo-gistics operations in the central African country of Cameroon. We handle vehicles, housing equipment, foodstuff and other materials and goods that are indispensable for the local people's everyday lives and their safety. Cameroon comprises a key logistics hub in Central Africa and much of the cargo going to and from Central Africa will be aggregated there. By continuously offering reliable logistics quality for this key Central African transport hub, we contribute to world peace in terms of, for example, continued security and peace and the prevention of food crises in Central Africa. We have also been strengthening and expanding our global partnerships with local logistics companies.

Supporting Cultural Exchange and Social Contribution Activities

Activities and Achievements

The NIPPON EXPRESS GROUP engages in a variety of community-based social contribution activities in each region. The main results of the activities are as follows.

Social contribution activities and achievements (FY2022)

	Total number of participants and dispatched personnel
Cleanup activities	9,630
Traffic safety campaign	312
Cooperation and participation in festivals	616
Blood donation	736
Dispatch of instructors to schools, etc.	40

Other social contribution activities: Baseball classes held by the Nippon Express Baseball Club, building schools, donating money and goods, etc.

Topics

NIPPON EXPRESS (CHINA) CO., LTD. Donates 2,000 pieces of Protective Suits to Xi'an International Inland Port Investment & Development Group (January 2022)

A lockdown imposed in Xi'an in December 2021 severely restricted traffic access to the railway terminal in Xi'an, resulting in a shortage of protective suits for railway terminal workers. Under these circumstances, NIPPON EXPRESS (CHINA) CO., LTD. urgently procured 2,000 pieces of protective suits in Shanghai and transported them 1,000 km from Shanghai to Wuhan, Xiangyang, and Xi'an amidst disrupted logistics networks, and, on January 7, 2022, donated them to Xi'an International Inland Port Investment & Development Group, which operates a railroad terminal in Xi'an, a key junction on the China Railway Express.

Contribute to Society Through Our Business Operations

Topics

Nippon Express (india) Private Limited Builds and Donates School Building in Karnataka State (April 2022)

Nippon Express (india) Private Limited has completed construction of a school building, a building that had been under construction for quite some time, on the premises of the Government Kannada Boys Model School that was donated to the school in March 2022.

A "model school" equates to a combined elementary and junior high school in Japan, and approximately 700 students attend this school for eight years from age six. Upon learning that a growing population had created a shortage of classrooms, NX India decided to build and donate a two-story school building featuring six classrooms with tiled floors and ventilation equipment not found in other classrooms.


A completion ceremony and prayer preceded the handover ceremony, where school officials warmly welcomed NX India representatives and expressed their thanks.



Government Kannada Boys Model School



At handover ceremony with Karnataka government officials

 Please see our website for details.

Nippon Express Co., Ltd. and NX Shoji Co., Ltd. Presented with Letters of Appreciation from the Ambassador of the Kingdom of Cambodia (July 2022)

Nippon Express Co., Ltd. (hereinafter "Nippon Express") and NX Shoji Co., Ltd. (hereinafter "NX Shoji") received a letter of appreciation from received letters of appreciation from the Ambassador of the Kingdom of Cambodia to Japan in July 2022.


NX Shoji has been engaged in a project to donate to overseas recipients used office fixtures no longer needed by local governments and companies due to office relocation or layout changes, and this scheme has won the support of many customers for helping establish recycling-oriented societies by promoting reuse as recommended by the Ministry of the Environment and for embodying the presentation of concrete results toward achieving the Sustainable Development Goals (SDGs).

Nippon Express decided to utilize NX Shoji's scheme to donate to Cambodia used office furniture no longer needed following the relocation of its head office from Shiodome at the end of 2021 with the aim of realizing the SDG concepts of international contributions and formation of recycling-oriented societies. Second-hand office fixtures were shipped by sea from Tokyo Port to Cambodia and delivered to the Cambodian Youth Federation in March 2022.

In recognition of Nippon Express' donation to the Cambodian Youth Federation and NX Shoji's donation scheme, the Ambassador of Cambodia to Japan presented letters of appreciation to Nippon Express and NX Shoji.



Presentation Ceremony with Second Secretary Borivath Kem (second from left) and His Excellency Tuy Ry, Ambassador of Cambodia to Japan (center)

 Please see our website for details

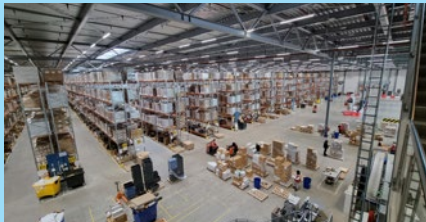
Contribute to Society Through Our Business Operations

Topics

Nippon Express Europe GmbH Conducts Logistics Seminar for Erasmus University Rotterdam in the Netherlands (November 2022)

In November 2022, Nippon Express Europe GmbH, held a seminar on logistics for around 140 students of Erasmus University's Rotterdam School of Management at a warehouse operated by NIPPON EXPRESS (NEDERLAND) B.V. in Maasvlakte, Rotterdam.

Erasmus University Rotterdam is an educational institution with a worldwide reputation in the disciplines of medicine, management, economics, and international public management and policy. This seminar was conducted as part of the master's program for students majoring in supply chain management at the Rotterdam School of Management to familiarize them with logistics operations in the field. A shipper company was invited to give a presentation on their warehouse operations and the NIPPON EXPRESS GROUP's position within the customer's supply chain, after which the students toured the approximately 102,000m² warehouse facility. The students asked many questions and engaged in a lively exchange of opinions to see how the theory they had learned in lectures applied to actual operations.



Interior of warehouse operated by NIPPON EXPRESS (NEDERLAND) B.V.



Seminar in progress



Please see our website for details.

Vietnamese Ambassador Visits NX AgriGrow Co., Ltd. (August 2022)

The NIPPON EXPRESS GROUP established NX AgriGrow Co., Ltd. (formerly Nittsu Farm Co., Ltd.) in Hokuto City, Yamanashi Prefecture in 2016, and the company has since been working with the local community on projects aimed at eliminating abandoned farmland, contributing to local employment and resolving other issues facing the city. In February 2023, NX AgriGrow concluded a comprehensive partnership agreement with Hokuto City to promote the sustained development of agriculture and revitalize the local economy, and it is striving through Hokuto's key industry of agriculture to create a new model for sustainable regional development.

In August 2022, Vietnamese Ambassador to Japan His Excellency Vu Hong Nam recently made a tour of companies in Hokuto City and visited NX AgriGrow, a firm engaged in cutting-edge agriculture.



Third from right: Ambassador His Excellency Vu Hong Nam; second from right: President Moroi



Please see our website for details.